

# vitra810™ for SubCycl<sup>®</sup>



SUBLIMINAL<sup>®</sup>  
CYCLOPHOTOCOAGULATION

**Glaucoma Treatment**

# vitra 810™ for SubCyclo®

## ● SubLiminal Cyclophotocoagulation

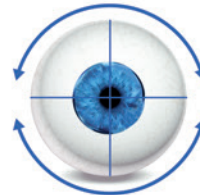
SubCyclo is a new nondestructive laser procedure for the treatment of glaucoma. skirtas glaukomos gydymui  
1. transskleralinės ciklofotokoaguliacijos principas

Based on the transcleral cyclophotocoagulation principle, it relies on the 810 nm SubLiminal stimulation of the ciliary body, producing the aqueous humour, and the uveoscleral pathway, secondary route of the aqueous outflow.

This procedure can be performed thanks to the combined use of the Quantel Medical Vitra 810 laser and the Quantel Medical SubCyclo probe.



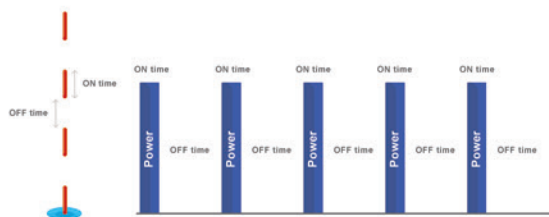
Tip of the probe positioned at 3 mm posterior to the limbus. Probe perpendicular to the eyeball.



Laser treatment delivered by moving the tip of the probe in a continuous sliding motion:  
- from 9:30 to 2:30 (superior quadrant)  
- from 3:30 to 8:30 (inferior quadrant)

## ● Vitra 810 - SubLiminal Technology

Composed of a train of extremely short microsecond pulses of which the duration and the intervals are fully adjustable, this subthreshold treatment mode allows a precise management of the thermal effect on the targeted tissues and preserves the structures of the ciliary body.



## ● SubCyclo Laser Probe

The SubCyclo laser probe features a unique needle design allowing a perfect and accurate probe positioning during the treatment which can be enhanced thanks to ultrasound biomicroscopy or transillumination techniques.

The tip of the needle also features a glass ball ensuring an easy and comfortable sweeping motion.





# Glaucoma Treatment

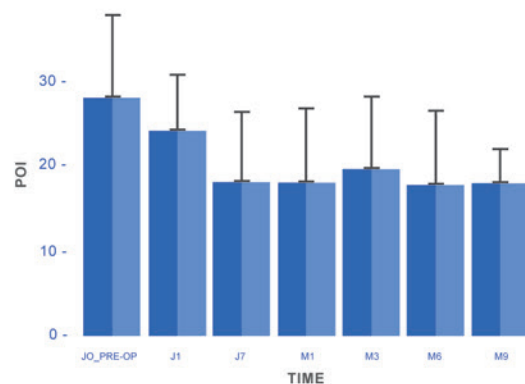
## ● SubCyclo Clinical Data

### A new treatment for advanced and end-stage glaucoma

Primary angle glaucoma, primary angle closure glaucoma, pseudo-exfoliation, neovascular glaucoma, glaucoma associated with steroid uses, uveitis and after keratoplasty surgery<sup>(1)</sup>

### An efficient treatment procedure leading to a reduction in the medication regimen

Significant and persistent reduction in IOP at 9 months<sup>(1)</sup>



Mean number of medication<sup>(1)</sup>

- Before treatment:  $3.4 \pm 1.7$
- After treatment:  $2.9 \pm 1.6$

30% decrease from baseline and less than 21 mmHg

### SubCyclo preserves the structures of the ciliary body (no destructive effects) and improves the uveoscleral drainage

After treatment:

- No anatomical damage or visible lesion have been observed by ultrasound biomicroscopy<sup>(1)</sup>
- UBM shows a thin space between sclera and ciliary body which may correspond to the presence of suprachoroidal fluid<sup>(1)</sup>

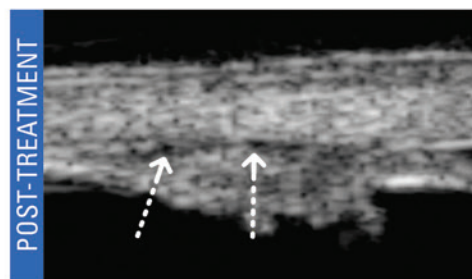


Image courtesy of Dr. Nassima Benhatchi

### SubCyclo avoids the side effects of the thermal cyclophotocoagulation procedure

No serious side effects such as intraocular inflammation after treatment<sup>(1)</sup>

No severe complications such as phthisis bulbi, persistent hypotony, or cystoid macular edema<sup>(1)</sup>

### A repeatable treatment<sup>(1)</sup>

### A safe treatment potentially allowing for earlier laser interventions

<sup>(1)</sup> - Efficacy, tolerability, side effects, anatomical effects (UBM) of SubCyclo subthreshold cyclophotocoagulation. 9-month study (43 eyes / 34 patients) presented at the French Society of Ophthalmology 2017 (SFO). Dr. Yves Lachkar and Dr. Nassima Benhatchi - Glaucoma Institute, Saint Joseph Hospital, Paris (France). Data on file.

Quantel Medical SubCyclo lazerio zondai yra sukurti unikaliai su nuimama kojine plokšte įgyvendinant abi Ikislenkstinę (Sublimacinę - subciklo ) ir termo gydymo procedūras.

## ● Vitra 810: A versatile laser

### One single laser probe: Two glaucoma treatments

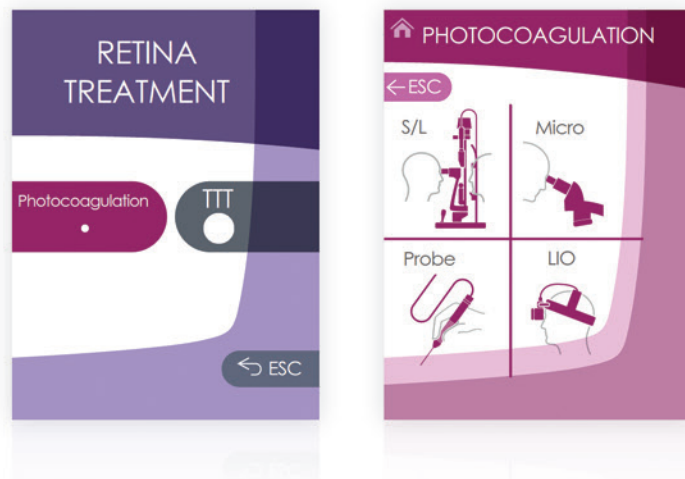
13. Quantel Medical SubCyclo laser probe is uniquely designed with a removable footplate allowing implementing both  
6. - 6. SubLiminal and thermal treatment procedures.



### One laser: Two clinical applications

Although designed for the SubCyclo laser therapy, Vitra 810 can also be used to perform all the usual 810 nm glaucoma and retina treatments.

When used in Retina treatment mode, Vitra 810 can be connected to various delivery systems, such as slit lamp, LIO, operating microscope and laser probes.



11. Spalvotas ekranas





# vitra810™ for SubCyclo®

## TECHNICAL SPECIFICATIONS

### VITRA 810 nm

Laser Source:	Solid State Technology Kieto Kūno Technologija
Wavelength:	810 nm
Power at tissue up to:	3W
Pulse duration:	0.01 s to continuous nuo 0.01 s iki tolygaus režimo
Aiming beam:	635 - 650 nm
Repeat interval:	0.1 - 0.2 - 0.3 - 0.5 - 0.7 s
Emission modes:	Pavienis, pasikartojantis, nepertraukiamas žymėjimo Single, repeat, continuous, painting Subliminal Mode (duty cycle from 5% to 35%) 9. darbo ciklas nuo 5% iki 35%
Size:	18 (H) x 19.5 (W) x 30 (D) cm 7.1" (H) x 7.7" (W) x 11.8" (D)
Weight:	5.6 kg - 12.3 lbs
Cooling:	by Peltier effect Peltjė efektu
Power requirements:	100 to 240 VAC, 350 VA, 50/60 Hz

### DELIVERY SYSTEMS

#### Slit lamp adapters

Slit lamp compatibility: Quantel Medical slit lamp, Haag Streit 900 BM & BQ and clones Zeiss 30SL, Zeiss 120SL, Zeiss 130SL & CSO 980

Spot size: 100 µm to 1000 µm

#### Laser indirect ophthalmoscope

Keeler Vantage Plus (external laser adapter)

#### Laser probes

Straight 20, 23, 25 G  
Curved 20 G  
Flexible curved 23, 25 G  
Illuminated flexible curved 23, 25 G  
Steerable 23, 25 G  
SubCyclo probe

#### OR microscope adapters

Zeiss type  
Leica type

© 2020 Quantel Medical. Vitra 810, SubLiminal® and SubCyclo® are trademarks of Quantel Medical. All rights reserved.

2. Lazerio šaltinis:  
3. Bangos ilgis:  
5. Galia ties audiniu iki:  
7. Impulso trukmė:  
8. Intervalas tarp impulsų:  
6. Emisijos režimai:

10. Nusitaikymo spindulys:

17. Maitinimo šaltinis:

4. Aušinimas:

12. Plyšinės lempos adapteriai

12. Lazerinis netiesioginio vaizdo oftalmoskopas

12. Lazerio zondai

www.quantel-medical.com



**Headquarters**  
Quantel Medical  
11, rue du Bois Joli - CS40015  
63808 Courron d'Auvergne - FRANCE  
Tel: +33 (0)4 73 745 745  
Email: contact@quantel-medical.fr

**North America**  
Quantel Medical USA  
2313 Ridge Road Suite 105A  
Rockwall, TX 75087 - USA  
Tel: +1 888 660 6726  
Email: info@quantelmedical.com

**Poland**  
Quantel Medical  
ul. Racławicka 93  
02-634 Warszawa - POLAND  
Tel: +48 22 5210111  
Email: info@quantel-medical.pl



**Quantel**  
medical  
BY LUMIBIRD



ISO 9001 : 2015 - ISO 13485 : 2016

**Representative Offices**  
Thailand, Chiang Mai  
Brazil, Rio De Janeiro